

STEELFIX Lijnsysteem EN-795:2012 type C



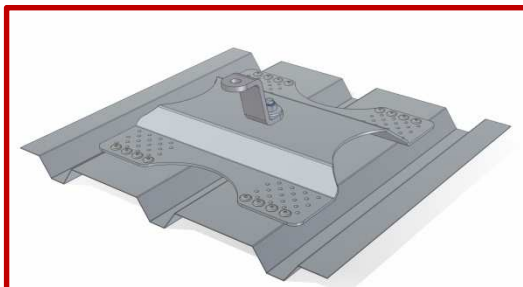
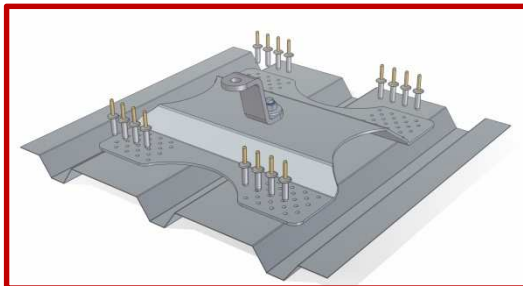
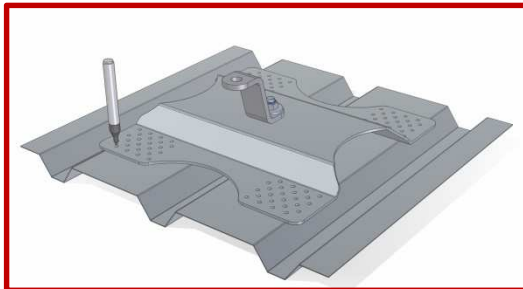
Productinformatie

- Geschikt voor metaaldaken (o.a. koelcellen)
- Inclusief 16 treknagels & bitumen tape
- Innovatieve en sterk absorberende valdemper
- Maximaal twee personen
- Gecertificeerd door DEKRA Exam GmbH
- EN-795:2012 type C & TS 16415:2013
- Gepatenteerd dempingsysteem

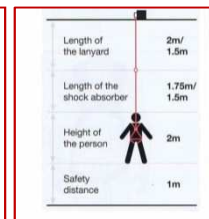
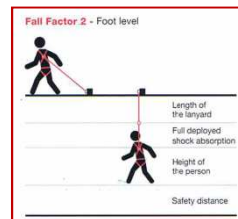
Technische informatie

- Min. 0,42 mm staal en 0,7 mm aluminium
- Boorgat 5,5 mm
- Bereik 220 - 340 mm
- Formaat Steelfix 370 x 370 mm
- Basisplaat en brackets RVS
- Staalakbel RVS met ID-ribbon intern
- Shuttle lijnsysteem RVS

Tekeningen & impressies



Markeringen & informatie



Calculating your fall arrest and safety working height

Calculations using a fall arrest lanyard fixed at foot level

	2m Lanyard	1.5m Lanyard
Lanyard Length	2m	1.5m
Energy Absorber	1.75m	1.5m
Body Height	2m	2m
Safety Distance	1m	1m
Deflection Line	1.5m	1.5m
Minimum Clearance	8.25m	7.5m

